

Installation Guide for Sony sa01xx ADB Interface Driver

Contents

| | |
|--|---|
| Introduction | 3 |
| Preparations..... | 3 |
| Installation Guide for automatic driver installation..... | 4 |
| Installation Guide for manually driver installation for Windows XP | 7 |

| Revision | Description | Date |
|----------|--|----------|
| 1 | First release: LT22i, MT27i, ST27i, ST27a, LT26i, LT26ii and LT26w. | 12.05.20 |
| 2 | Products added: LT28h, LT29i, LT30p and SO-04D | 12.08.31 |
| 3 | Products added: LT25c, LT25i, LT28at, LT28i, LT30a, LT30at, SO-01E and SOL21 | 12.09.14 |
| 4 | Products added: C6602, C6603, L36h and SO-02E | 12.11.10 |
| 5 | Products added: C6502, C6503, C6506 and L35h | 13.02.04 |
| 6 | Products added: SO-03E | 13.02.17 |
| 7 | Products added: C6606, SGP311, SGP312, SGP321, SGP341 and SGP351 | 13.03.06 |
| 8 | Products added: C5302, C5303, C5306, M35c and M35h | 13.03.27 |
| 9 | Products added: C6616, C6802 and XL39h | 13.04.13 |
| 10 | Products added: C2305 and S39h | 13.07.23 |
| 11 | Products added: C6806, C6933, C6902, C6903, C6906, L39h, SO-01F and SOL23 | 13.07.29 |
| 12 | Products added:M35t | 13.09.06 |
| 13 | Products added: C6843 and C6943 | 13.11.03 |
| 14 | Products added: L39t and SO-02F | 13.12.16 |

| | | |
|----|---|----------|
| 15 | Products added: L39u and C6916 | 13.12.20 |
| 16 | Products added: C2304, SGP412 and SOL24 | 14.01.15 |
| 17 | Products added:D5503 | 14.01.24 |
| 18 | Products added:M51w, D5322 and XM50h | 14.03.09 |
| 19 | Products added:XM50t, D6502, D6503, D65043, L50w, SGP511, SGP512, SGP521, SGP541 and SGP551 | 14.03.19 |

Introduction

This Guide contains two sections the preparations which are done to the phone, and the Installation Guide for Windows XP which is done on the computer.

Preparations

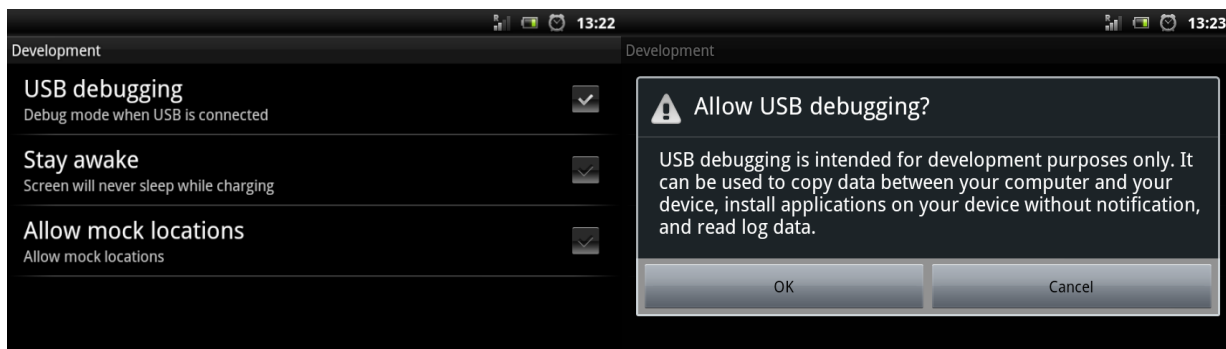
Turn on the phone.

Turn on USB debugging.

Old Android SW this setting is found in Settings->Applications->development.

New Android SW this setting is found in Settings->System->Developer options. If no developer options press 7 times at Build number in Settings ->System->About phone.

Accept Allow USB debugging.



Connect the phone to the computer with USB cable.

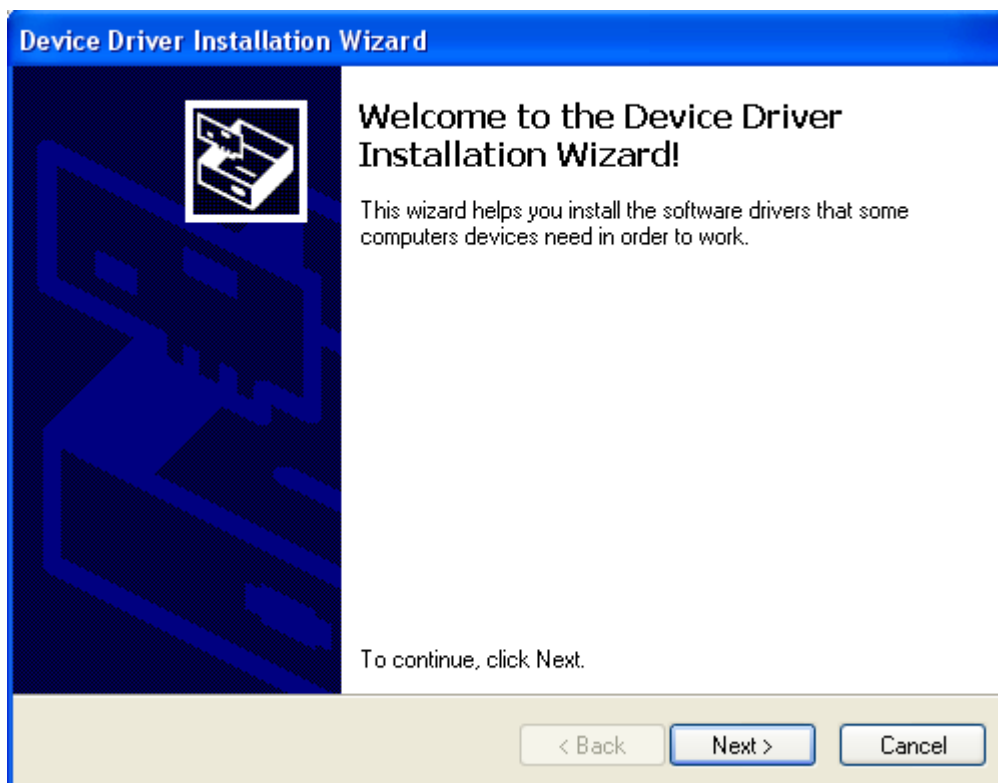
Installation Guide for automatic driver installation

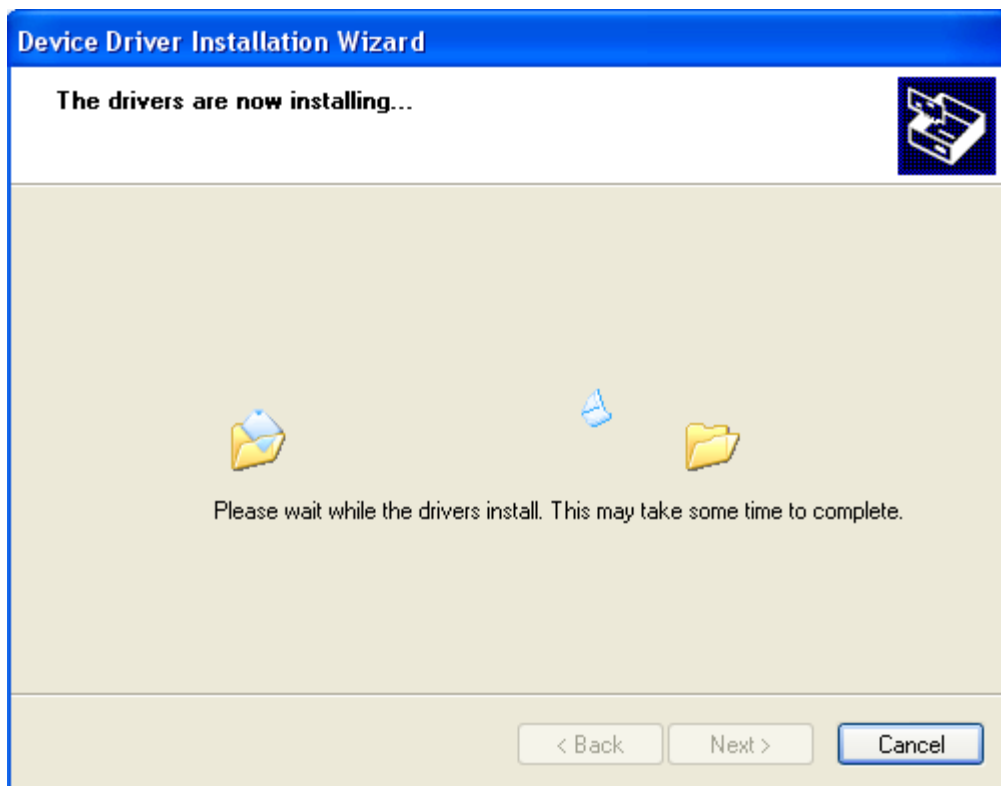
This guide explains how to install the Sony sa0103, Sony sa0104, Sony sa0105, Sony sa0106, Sony sa0107, Sony sa0108 and Sony sa0109 ADB Interface Drivers.

From the installation package run the Install adb drivers.

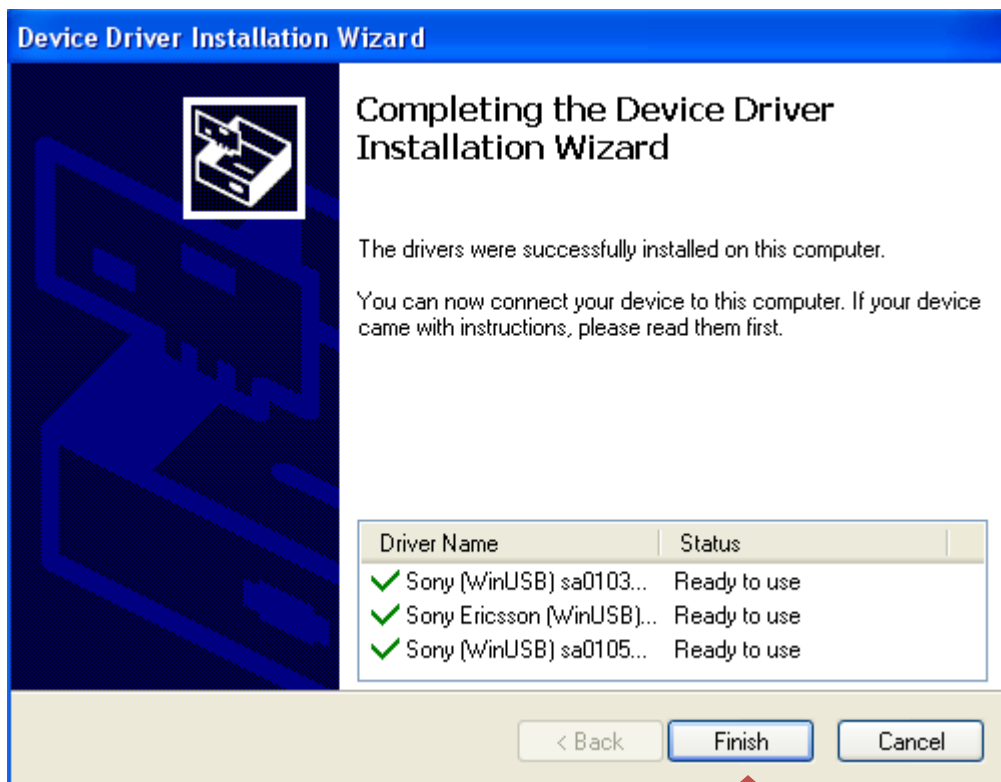


The installation process will then start. Click Next.





Click Finish.



After the driver installation, the system should find the drivers automatically, if not follow manual Installation Guide below.

Installation Guide for manually driver installation for Windows XP

This guide explains how to manually install the Sony sa01xx ADB Interface Driver on a Windows XP system.

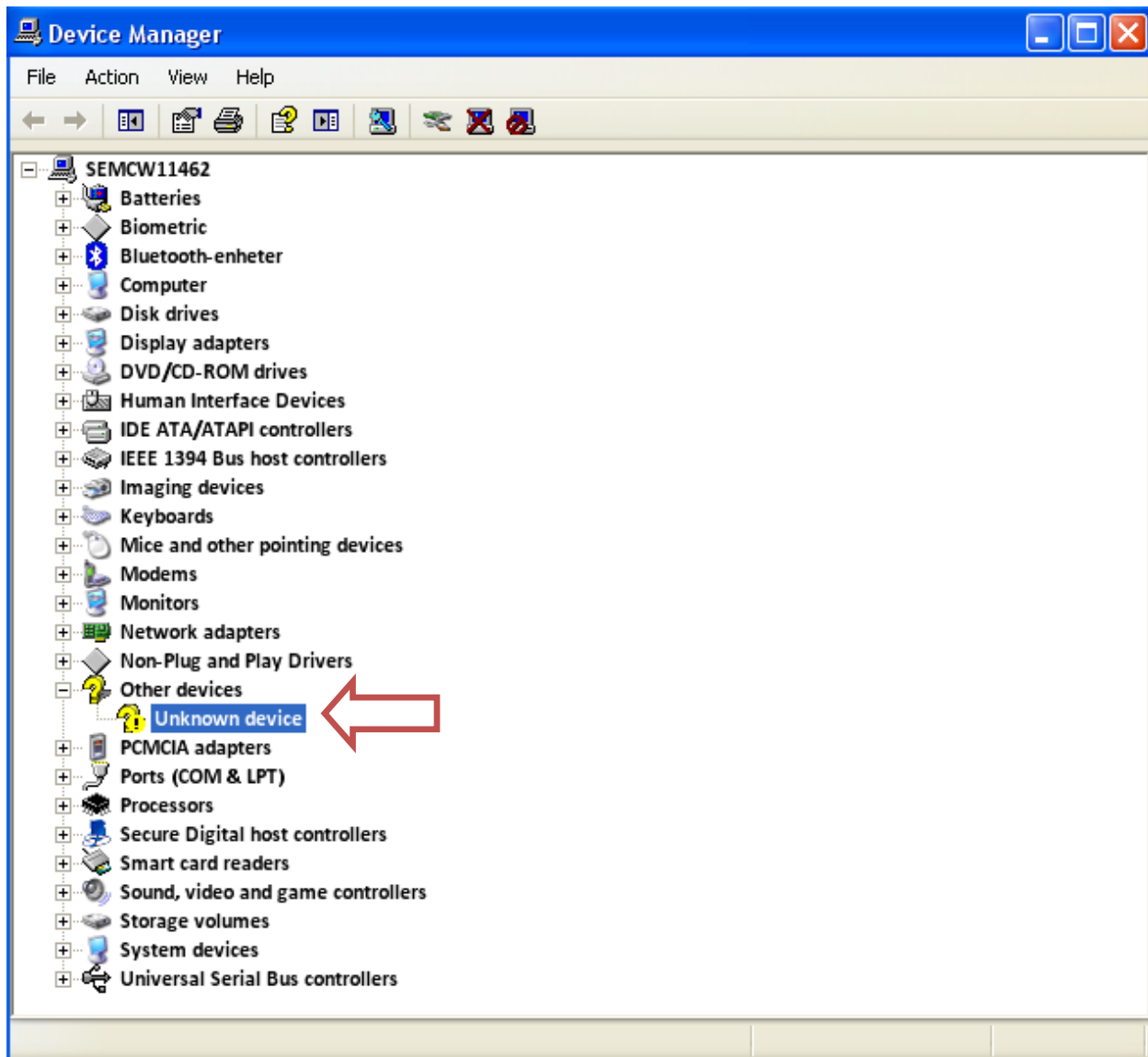
After the preparation step do the following.

If add new hardware pops up, when the phone is connected, follow the guide from Page 9.

If no add new hardware pops up, when the phone is connected, start device manager following the path below. And follow guide from next page.

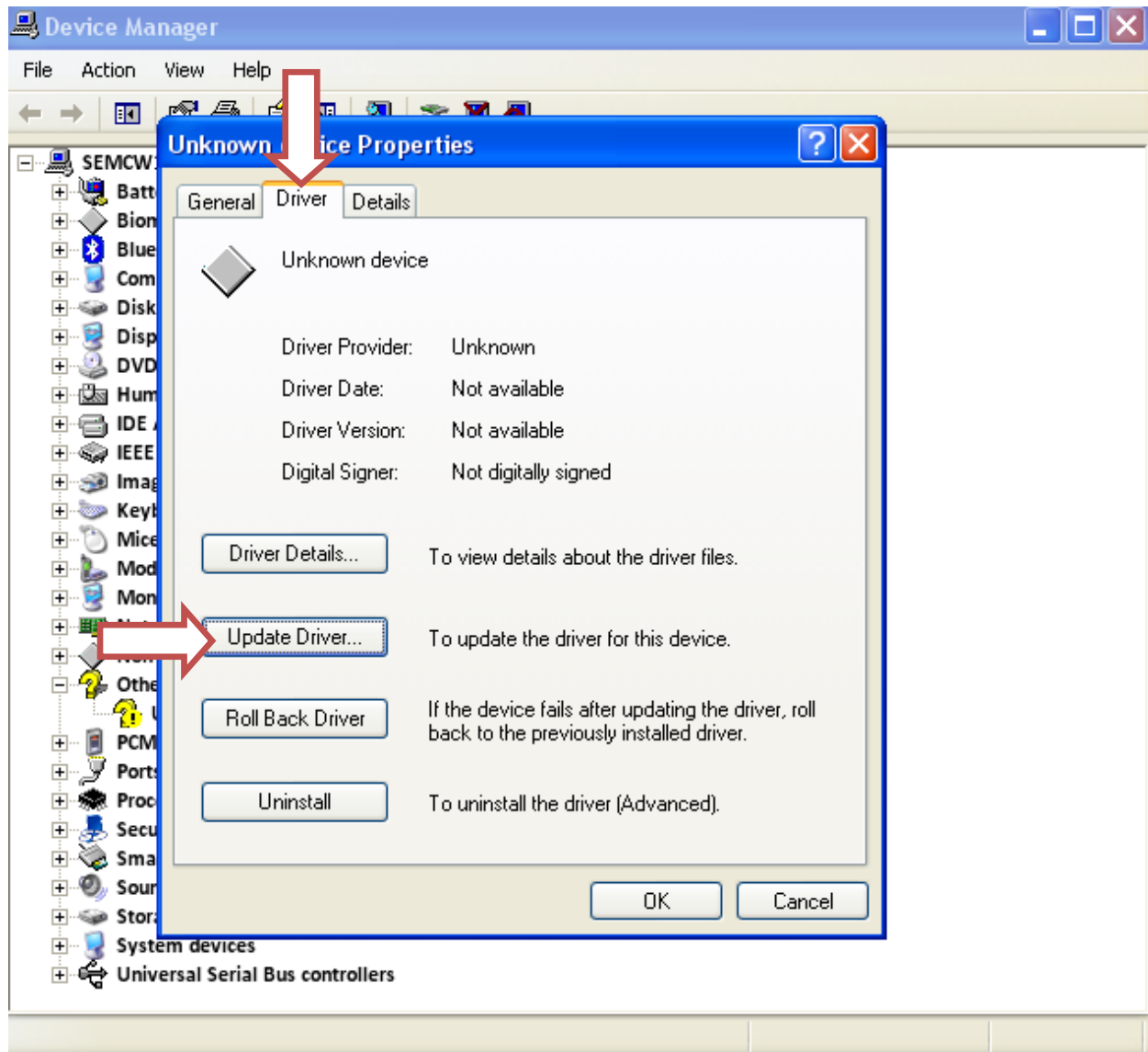
Open Device Manager from Start->Setting->Control Panel->System->Hardware->Device Manager.

Open Unknown device. That appears when the phone is connected.

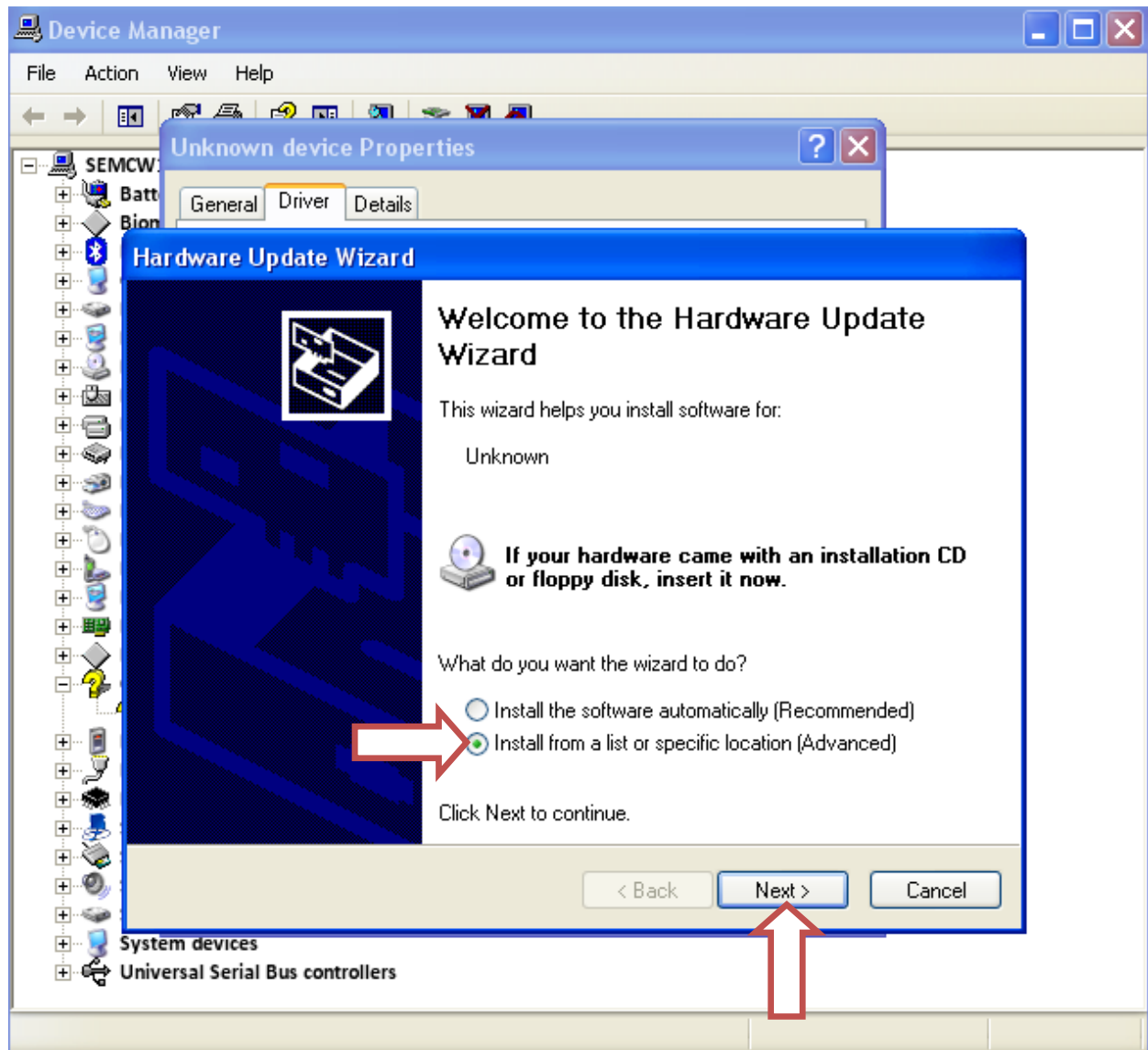


Click the Driver tab.

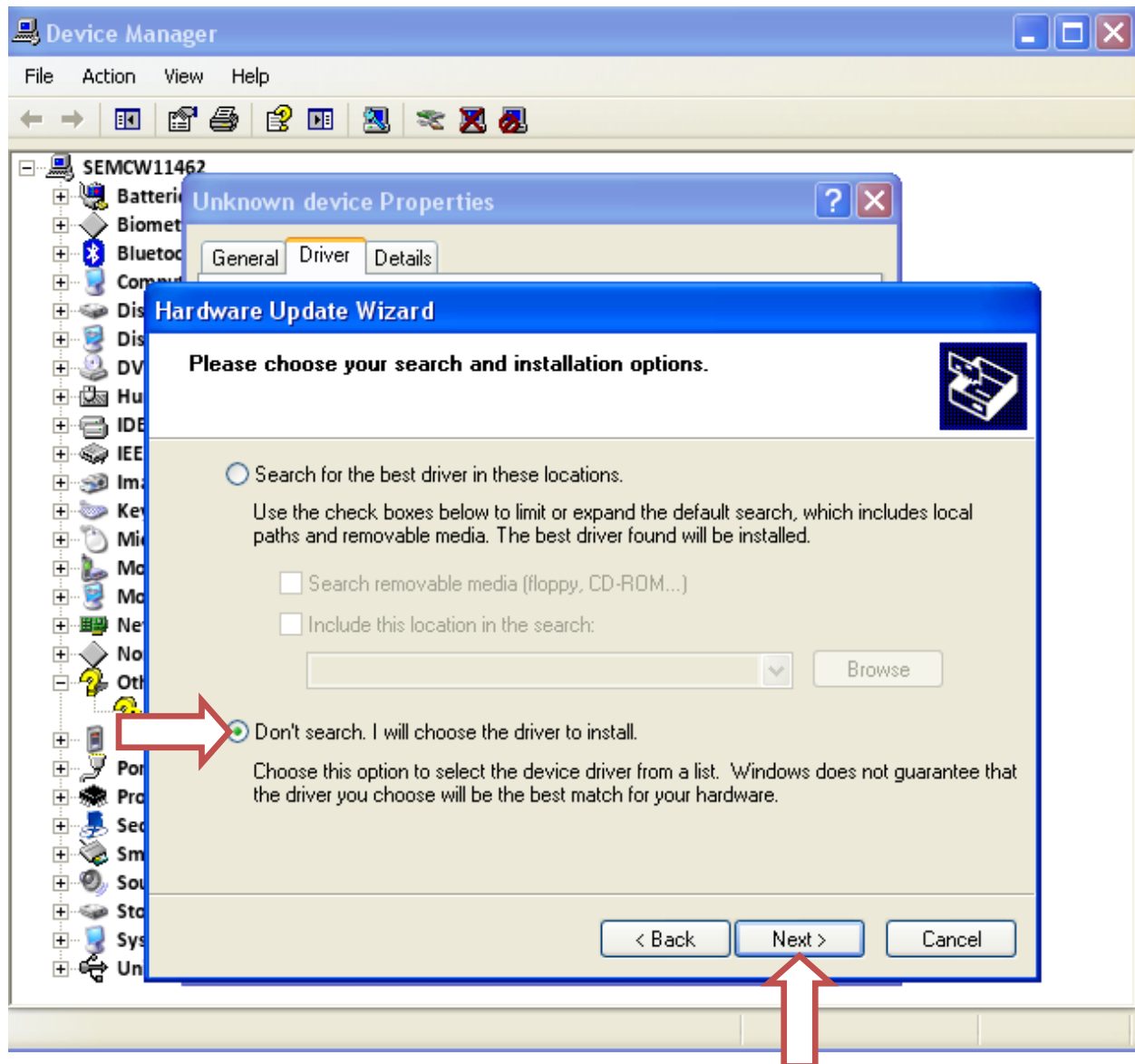
Click Update Driver.



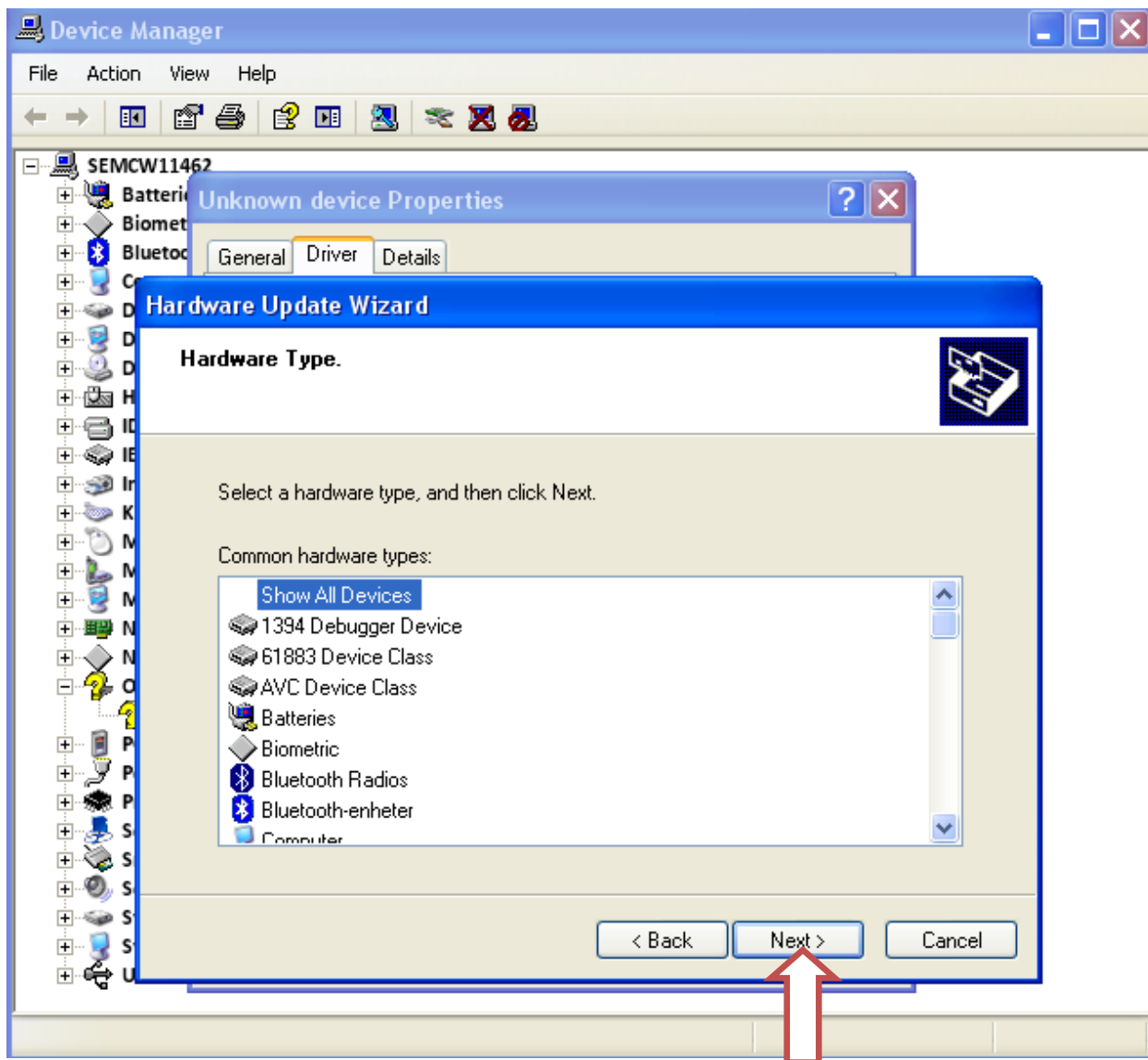
Check Install from a list or specific location (Advanced).
Click Next.



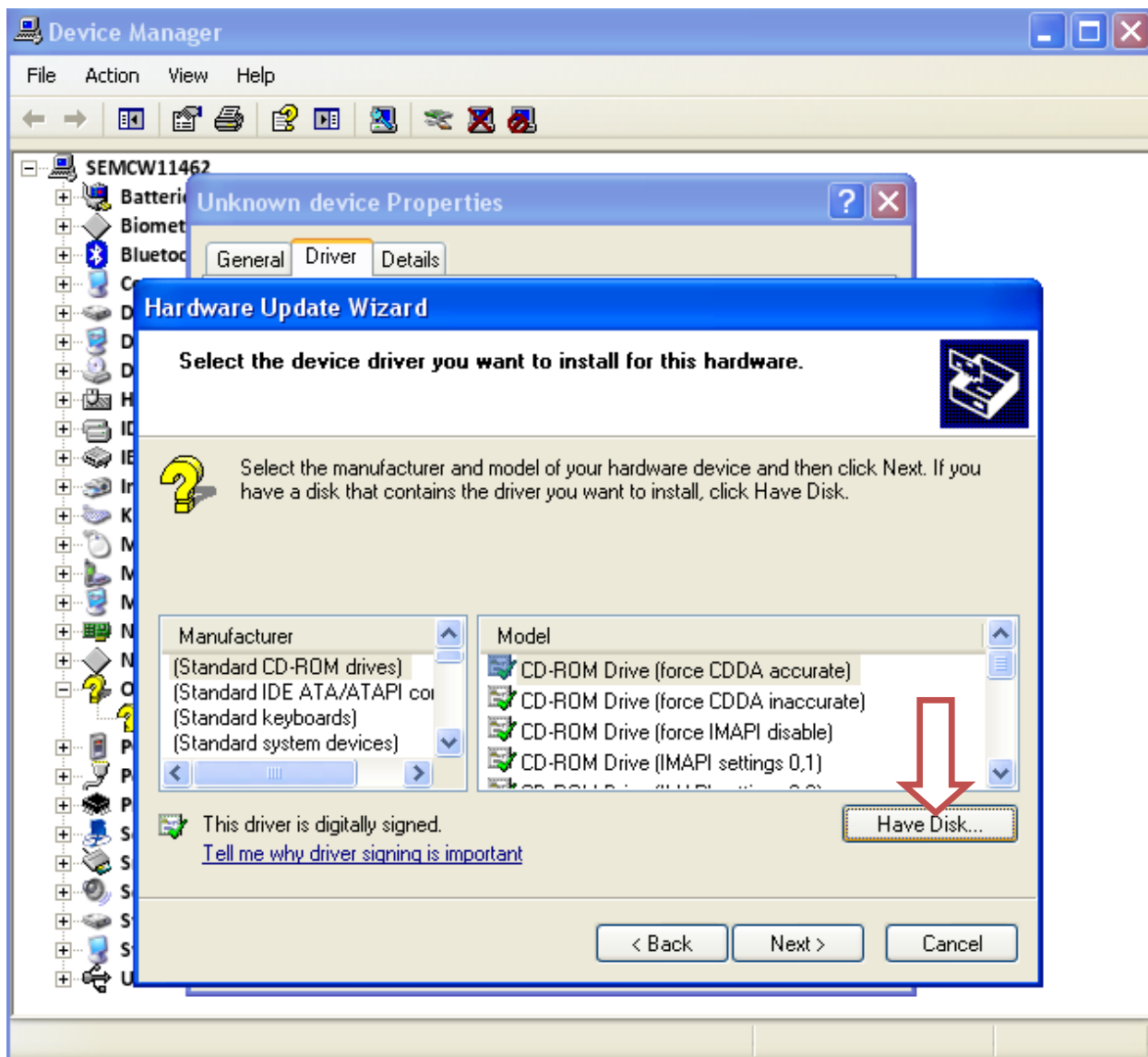
Check don't search. I will choose the driver to install.
Click Next.



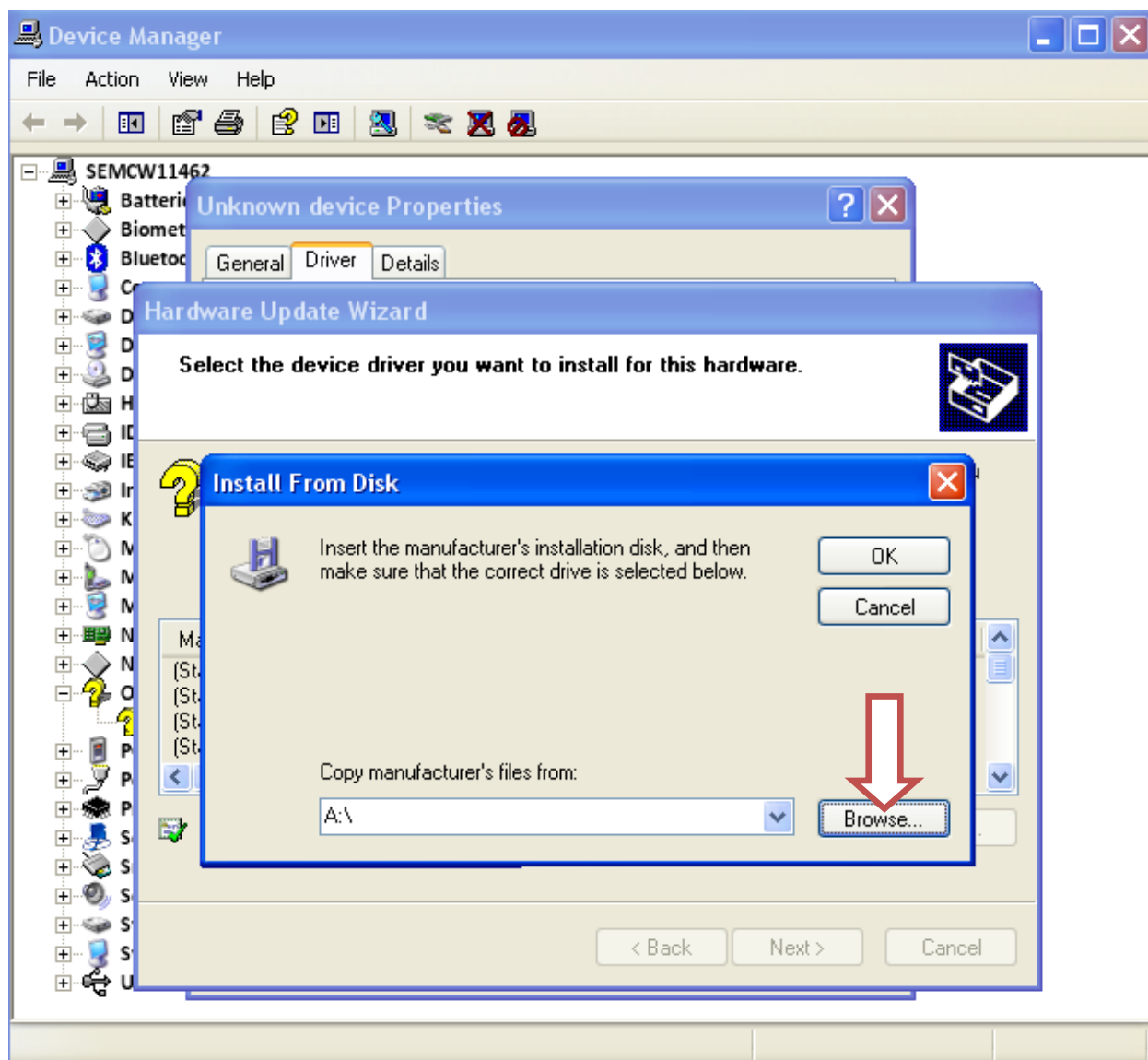
Click Next.



Click Have Disk.



Click Browse.



Browse to the folder where you have downloaded the driver.
Select the sa010xusb driver. In the SEMC_Signed folder.

Note: Use sa0103usb drivers for LT26i, LT26ii, LT26w, LT28at, LT28h and LT28i.

Use sa0104usb drivers for MT27i, LT22i, ST27i and ST27a.

Use sa0105usb drivers for LT29i, SO-04D, LT30a, LT30at and LT30p.

Use sa0106usb drivers for LT25c, LT25i, SO-01E and SOL21.

Use sa0107usb drivers for C6502, C6503, C6506, C6602, C6603, C6606, C6616, L35h, L36h, SGP3xx, SO-02E and SO-03E.

Use sa0108usb drivers for C5302, C5303, C5306, M35c and M35h.

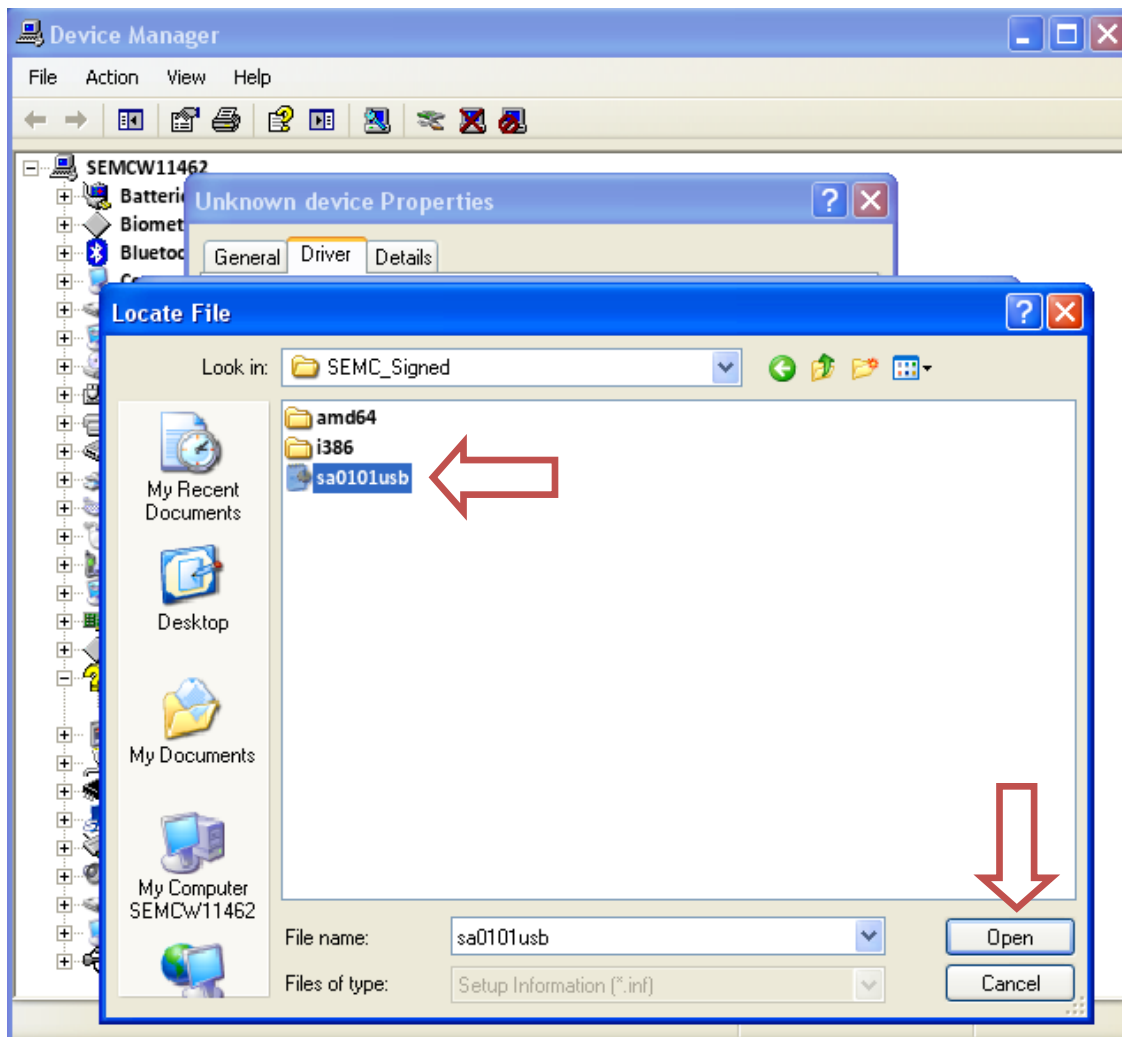
Use sa0109usb drivers for C6802, C6806, C6833, C6843, SPG412, SOL24, XL39h, C6902, C6903, C6906, C6943, L39, SO-01F, D5503, SO-02F, SOL23 and M51w.

Use sa0110usb drivers for D5322, XM50h and XM50t.

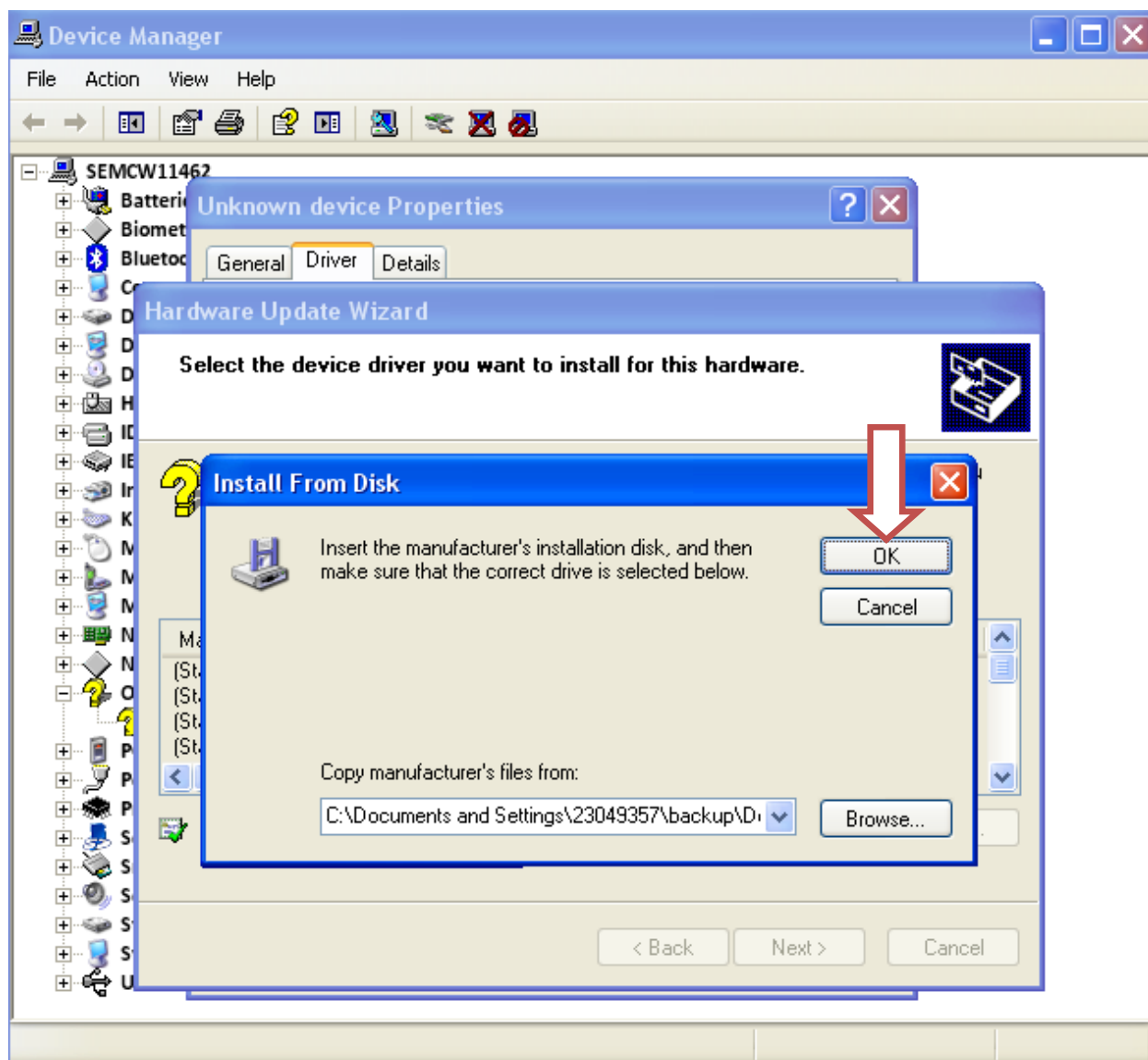
Use sa0111usb drivers for D6502, D6503, D6543, L50w, SGP511, SGP512, SGP521, SGP541 and SGP551

Use so0101usb driver for C2304, C2305 and S39h.

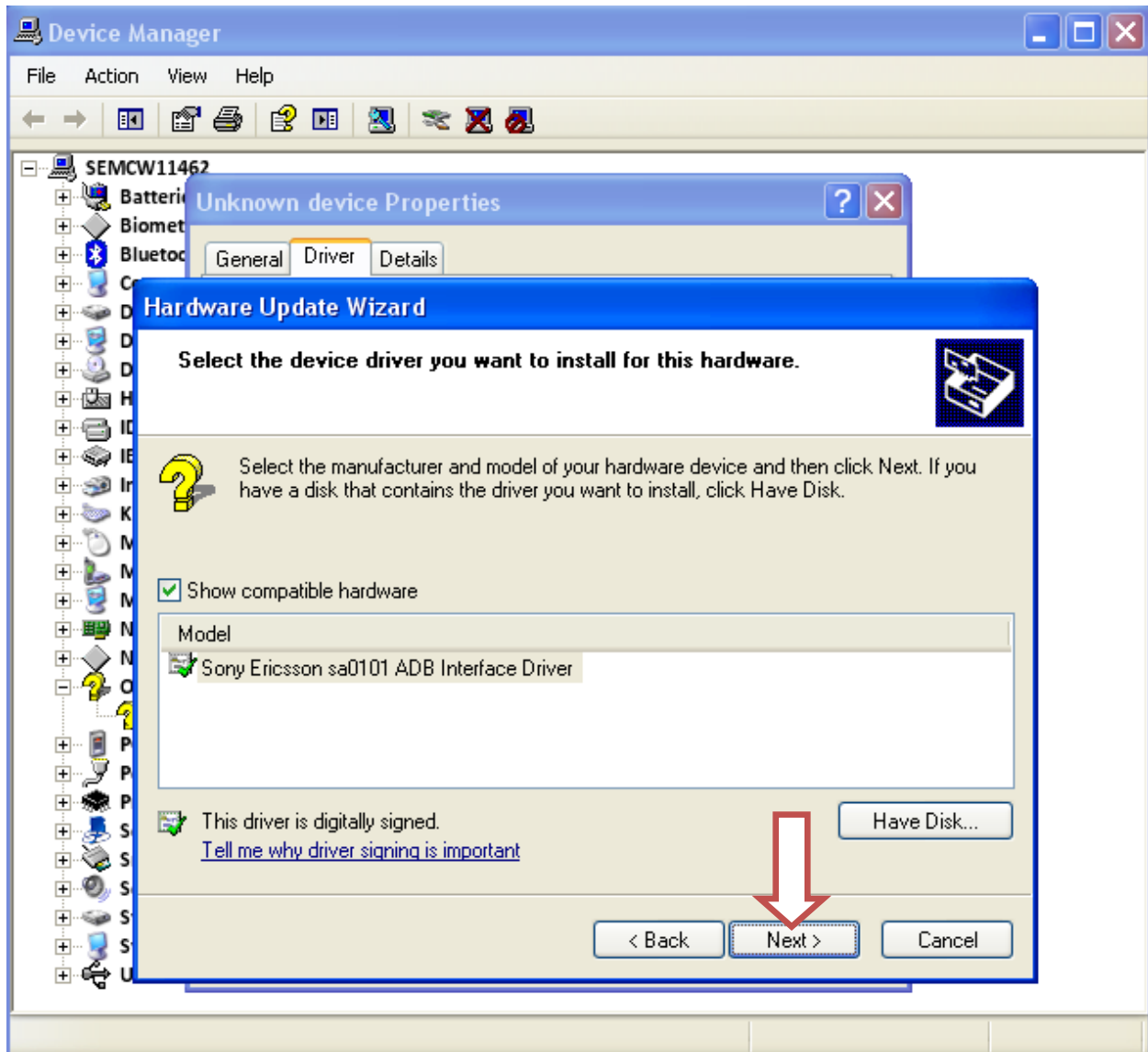
Click Open.



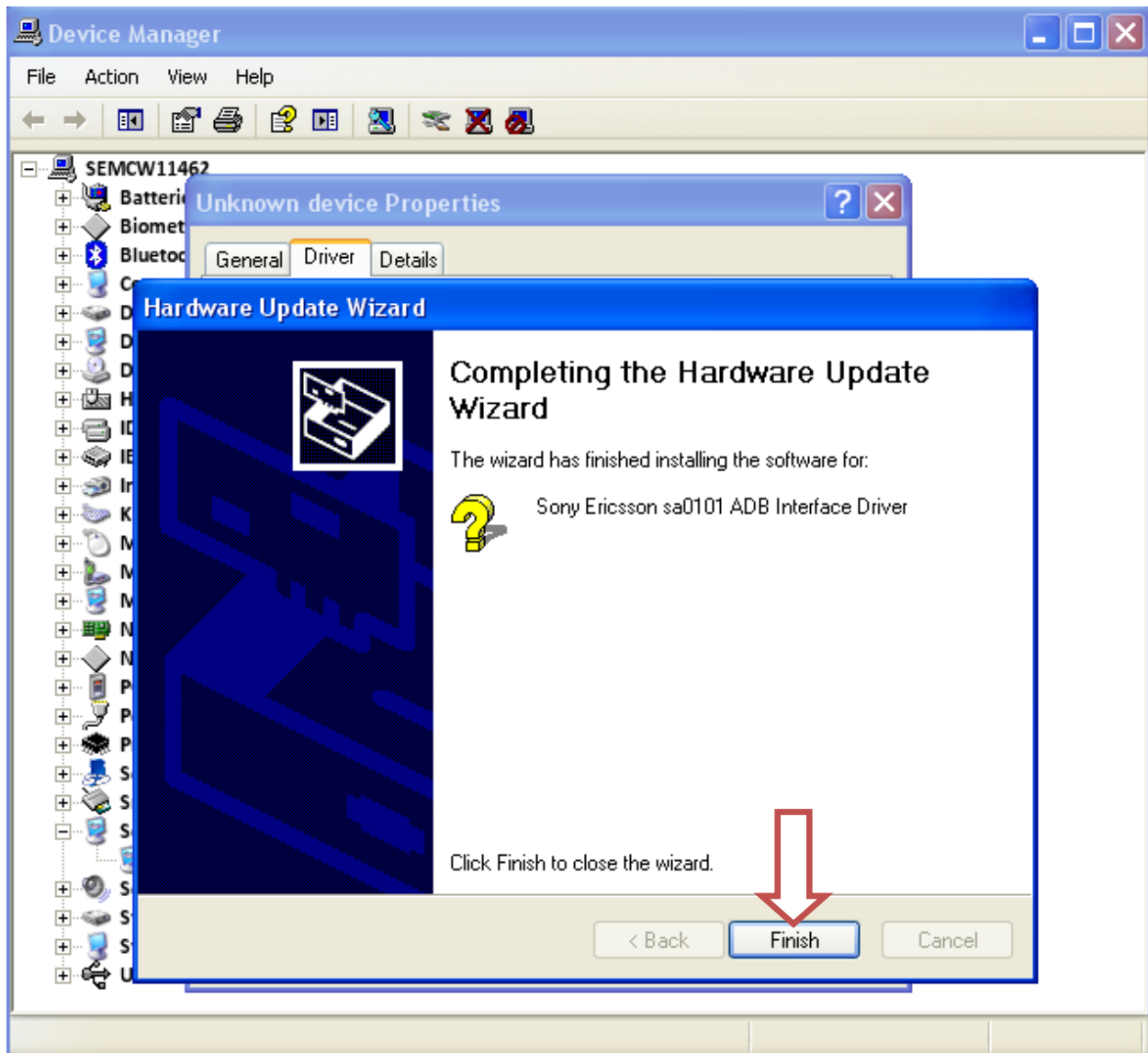
Click OK.



Click Next.



Click Finish.



Now it should say Sony Ericsson sa0101 ADB Interface Driver.

Note :

Sony sa0103 ADB Interface Driver is used for LT26i, LT26ii, LT26w, LT28at, LT28h and LT28h

Sony sa0104 ADB Interface Driver is used for MT27i, LT22i, ST27i and ST27a.

Sony sa0105 ADB Interface Driver is used for LT29i, SO-04D, LT30a, LT30at and LT30p.

Sony sa0106 ADB Interface Driver is used for LT25c, LT25i, SO-01E and SOL21.

Sony sa0107 ADB Interface Driver is used for C6502, C6503, C6506, C6602, C6603, C6606, C6616, L35h, L36h, SGP3xx, SO-02E and SO-03E.

Sony sa1008 ADB Interface Driver is used for C5302, C5303, C5306, M35c and M35h.

Sony sa1009 ADB Interface Driver is used for C6802, C6806, C6833, C6843, SGP412, SOL24, XL39h, C6902, C6903, C6906, C6943, L39, SO-01F, D5503, SO-02F, SOL23 and M51h.

Sony sa0110 ADB Interface Driver is used for D5322, XM51h and XM50t.

Sony sa0111 ADB Interface Driver is used for D6502, D6503, D6543, L50w, SGP511, SGP512, SGP521, SGP541 and SGP551.

Sony so0101 ADB Interface Driver is used for C2304, C2305 and S39h.

